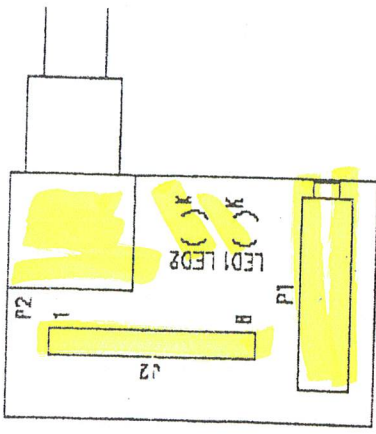
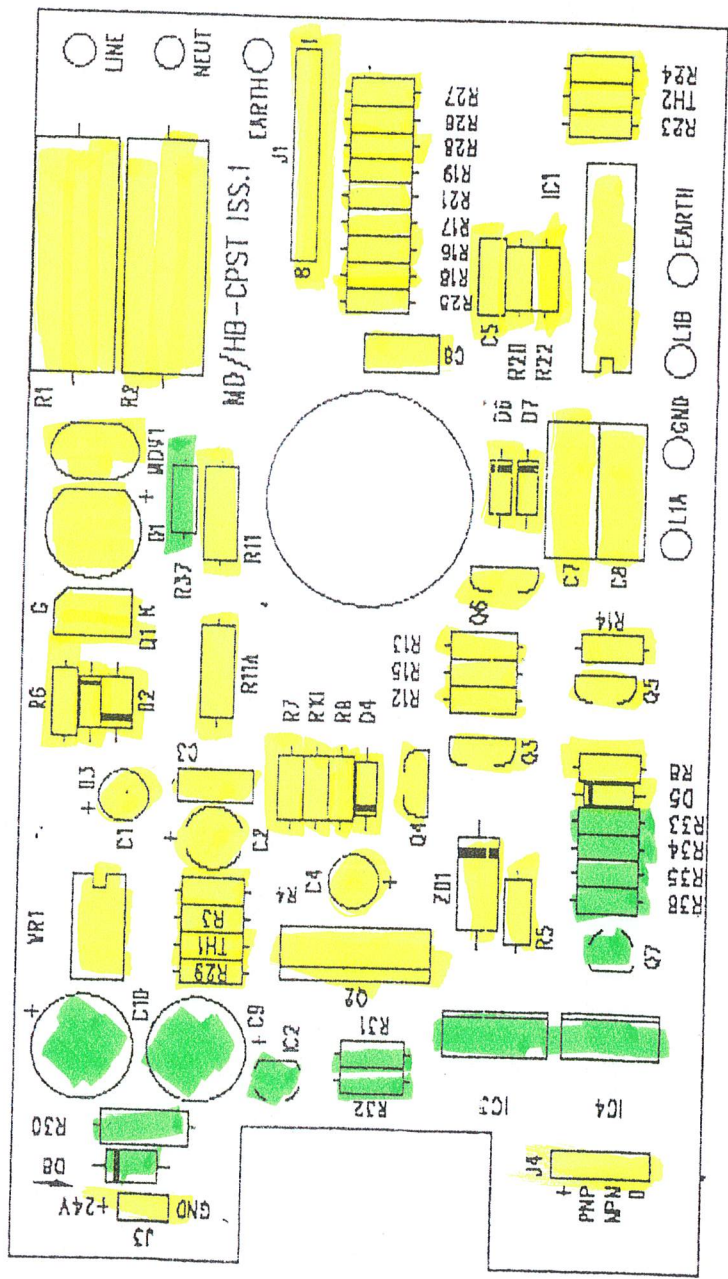


MODULE LAYOUT CAN BE BUILT AS

110 VAC 2 WIRE OR 240V AC NPN PNP OR ONLY FIT RELEVANT COMPONENTS

FITTED
NOT FITTED



Reverse

110VAC

MD/HB-CPST ISS.1
TOP CIRCUIT BOARD

MATERIALS

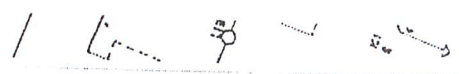
QTY.	DESIGNATION	DESCRIPTION	DWG. NO.	PART NO.	ITEM
1		BASE CIRC. BOARD	C-49173-001	49173-001	1
2	R1,R2	RESISTOR 5W, 15 OHMS	B-60314	60314-031	2
2	R11,R11A	RESISTOR 1/2W, 5%, 10K	B-60301	60301-057	3
1	R4	RESISTOR 1/4W, 1%, RN60, 169K	B-60309	60309-023	4
1	R29	RESISTOR 1/4W, 1%, RN60, 562K <i>RS 164-9757</i>	B-60309	60309-073	5
1	R3	RESISTOR 1/4W, 1%, RN60, 866K	B-60309	60309-091	6
1	R7	RESISTOR 1/4W, 5%, 2.2 OHMS	B-60300	60300-301	7
1	R28	RESISTOR 1/4W, 5%, 150 OHMS	B-60300	60300-043	8
3	R6,R27,R15	RESISTOR 1/4W, 5%, 1K	B-60300	60300-063	9
1	R21	RESISTOR 1/4W, 5%, 3.3K	B-60300	60300-075	10
2	R5,R23	RESISTOR 1/4W, 5%, 4.7K	B-60300	60300-079	11
1	R22	RESISTOR 1/4W, 5%, 10K	B-60300	60300-087	12
3	R17,R18,R19	RESISTOR 1/4W, 5%, 22K	B-60300	60300-095	13
1	R24	RESISTOR 1/4W, 5%, 18K	B-60300	60300-093	14
1	R26	RESISTOR 1/4W, 5%, 47K	B-60300	60300-103	15
2	R8,R14	RESISTOR 1/4W, 5%, 51K <i>RS 148-900</i>	B-60300	60300-104	16
1	R16	RESISTOR 1/4W, 5%, 75K	B-60300	60300-108	17
2	R9,R13	RESISTOR 1/4W, 5%, 100K	B-60300	60300-111	18
1	R12	RESISTOR 1/4W, 5%, 330K	B-60300	60300-123	19
1	R25	RESISTOR 1/4W, 5%, 470K	B-60300	60300-127	20
1	R10	RESISTOR 1/4W, 5%, 1M	B-60300	60300-135	21
1	R20	RESISTOR 1/4W, 5%, 510K <i>RS 149-155</i>	B-60300	60300-128	22
1	TH1	THERMISTOR, MSC203K <i>RS 198-933</i>	A-47292	47292-010	23
1	TH2	THERMISTOR, MSB103K <i>RS 198-927</i>	A-47292	47292-009	24
1	ZD1	ZENER DIODE, IN5347B <i>RS 314-8975</i>	A-47288	47288-104	25
1	D1	BRIDGE RECTIFIER, W06F <i>1004</i>	A-57355	57355-264	26
1	D2	DIODE, 1N4003	A-47288	47288-081	27
5	D3,D4,D5,D6,D7	DIODE, 1N4148	A-47891	47891-065	28
1	C5	CAPACITOR, 470pF <i>RS 127-105</i>	B-60316	60316-173	29
2	C7,C8	CAPACITOR, POLYPROPYLENE, .022/50	B-60316	60316-196	30
1	C6	CAPACITOR, POLYCARBONATE, .1/50 <i>RS 115-635</i>	B-60316	60316-224	31
1	C3	CAPACITOR, .15/50	B-60316	60316-174	32
1	C2	CAPACITOR, TANTALUM, 10/20	B-60316	47351-000	33
1	C1	CAPACITOR, ELECTROLYTIC, 10/50	B-60316	60316-234	34
1	C4	CAPACITOR, ELECTROLYTIC, 22/50	B-60316	60316-215	35
1	Q1	SCR, C106M1 <i>RS 183-772</i>	A-47289	47289-007	36
1	Q2	TRANSISTOR, TIP33A	A-47293	47293-096	37
4	Q3,Q4,Q5,Q6	TRANSISTOR, NPN, MPSA06	A-47293	47293-067	38
1	IC1 <i>SEE OTHER SHEET</i>	TRANSISTOR ARRAY, CA3183	B-47277	47277-183	39
1	VR1 <i>SHEET</i>	VOLTAGE REGULATOR, TPS7101Q ² (8 PIN DIP)	A-47966	47966-019	40
1	MOV1	METAL OXIDE VARISTOR, V150LA2	A-47891	47891-004	41
0.5	JMP1,JMP2,JMP3 JMP4,JMP5	WIRE, INSULATED SOLID 22 AWG CUT AS NEEDED (ANY COLOR WILL DO)	-	820-101-00-22	42
1	LED1	LED T1 RED 3mm	A-47288	47288-056	43
1	LED2	LED T1 YELLOW 3mm	A-47288	47288-055	44
1	P1	POTENTIOMETER 10 TURN 20K	A-48915	48915-011	45
1	P2	POTENTIOMETER CERMET SINGLE TURN 5K	A-57468	57468-061	46
1		PANEL MOUNT ADAPTER FOR 10 TURN POT	A-57468	57468-062	47
1		5 COND. FLAT JUMPER CABLE .1" PITCH 6" LNG	A-48806	48806-005	48
2		INSULATING TUBING .047" ID 1/2" LONG	A-57304	57304-012	49

C-49173-100

NOTES
5

RE LINE

229.
(EST)



110VAC

LONG	RANGE	PROX	COMPONENT	DATA
R1	15Ω	SW	WELWYN W22	LEAD 0.8 φ RS 159 382
R2	15Ω	SW	"	" " " "
TH1	MSC 203K	}	AXIAL THERMISTOR - SAME SIZE	
TH2	MSB 103K		AS 1/4W 5% RESISTOR	
PROBABLY LINE R.S. 198-933 & 198-927				
P1	20k	10TURN	3/4"	RS 162 243
P1	PANEL MOUNT ADAPTOR			RS 855 305
P2	5k	CERMET		RS 173 83 L86-8569
Q1	C106M1	THYRISTOR	TO 225	R.S. 183 772 183 772
C1	10μF / 35v	AL. ELECT.		RS. 228 671
C2	10μF / 25v	TANT BEAD		RS. 200 6088
C3	100nF / 50V	OR / 63V POLYESTER 5mm PITCH		R.S. 114 840
C4	22μF / 35v	AL. ELECT.		RS. 228 6723
C5	470pF / 100V	CERAMIC	0.2" PITCH	RS. 127 105
C6	100nF / 100V	POLYPROPYLENE	5mm PITCH	RS 820-854 POLYCAPS 3845741
C7	22nF / 100V	POLYPROPYLENE	10mm PITCH	RS 820 832
C8	"	"	"	"

POT CLAMPS — RS 509 — 816